

DESIGNER COLLECTION

CASEY

6038

SIZE

60" L x 38"W x 19"D

WATER CAPACITY

50 Gallons

WEIGHT

140 Pounds

INSTALLATION

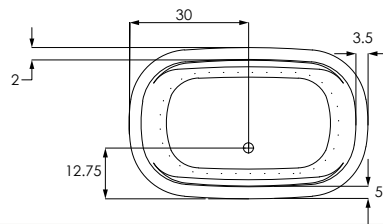
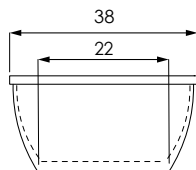
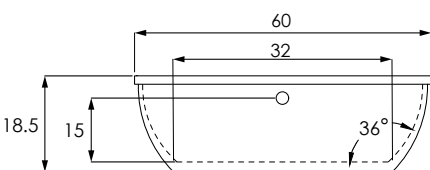
Freestanding

BACK SLOPE

36°

MATERIAL

Acrylic



MODEL	
CAS6038ATO	Tub Only
CAS6038ATA	Thermal Air
COLORS	
Standard	White Biscuit Bone
Premium Colors	Black Sterling Silver
FINISH	
Matte Finish	MAT (must specify if desired)
Polished Finish	STANDARD
DUAL COLOR OPTION	
MODEL/COLOR1/COLOR2	(XXX.XXX.XXX)
SURFACES (outside only)	
Metallic: Polished Nickel [PN]	
MODEL/METAL/COLOR	(XXX.XXX.XXX)
COLD PLUNGE order form	
	CLD.PL
EXPORT CRATE	
	FRT.EXPCRT
EXTRA HIGH DENSITY	
	HI.DEN
GRAB BARS (Pair) Refer to price book for all available finishes	
Standard Grab Bars	GRA.BAR-XXX
Universal Grab Bars	UGB.BAR-XXX

MODEL	
HEATED BACKREST	INCLUDED ON THERMAL AIR
HYDRO BLANKET	BLA.HEA-X
2 Zones 3 Zones 4 Zones 5 Zones (W/ 2 Controls)	
HYDRO COAT	HYC.COA
HYDRO EXPRESS	69.104-HYD.EXP-FRE
HYDRO FUSION order form	
Hydro Fusion (Tub Only)	29.102
Hydro Fusion w/ Ozone (Tub Only)	29.103
Hydro Fusion (TA, Whirlpool, Combo)	29.107
HYDRO INDULGE order form	HYD.IND
HYDRO OZONE	INCLUDED ON THERMAL AIR
ISLAND TUB DRAIN	ITD.XXX
ABS, PVC	ITD.ABS ITD.PVC
Cast Iron	ITD.CST

H | S

HYDRO SYSTEMS



Headquarters
29132 Avenue Paine
Valencia, CA 91355

Manufacturing Facility
385 Highway 155 South
McDonough, GA 30253

Technical Support
support@hydrosystem.com

Orders Department
orders@hydrosystem.com

General Information
info@hydrosystem.com

Phone: 661-775-0686

Website: hydrosystem.com

CODES AND COMPLIANCES

Massachusetts code File no: P1-0614-491



All specifications and options subject to change without notice
please contact a hydro systems representative for more information.

CASEY

6038

DESCRIPTION

LED TEMP. READOUT KEYPAD

Upgrade only, must have a keypad controlled system to purchase.

LED.UPG

LIGHTING

LED Bath Light Chromatherapy System

LIG.LED

MOLDED ARMRESTS

Some molded armrests add an interior detail line to the bathtub 2 Armrests (one pair)

ARM.MOL-2

4 Armrests (two pairs)

ARM.MOL-4

DESCRIPTION

PADDED HEADREST PILLOW

Black only

41.128

REMOTE CONTROL

Must must have system to purchase

REM.CON

TOWER

Must specify size & location on tub. Can hide plumbing, fusion, or indulge.

TOW-XX

18" or 24"

25" - 30"

31" - 36"

37" - 42"

43" - 48"

49" - 54"

55" - 60"

Access Panel

INTEGRAL W/O (Std. round)

IWO.XX (INCLUDED)

Waste and overflow manufactured as part of the bath.
Comes standard as a round overflow cover. Drain will be a tip-toe style and drain outlet will be a direct drain.

(WHI, BIS, PC, PB, PN, BC, BB, BN, SC, SB, SN, ORB, PE, MB)

W/O - Gold Finish Upgrade (PG, BG)

LINEAR INTEGRAL W/O

LWO-XXX (NO CHARGE UPGRADE)

Waste and overflow manufactured as part of the bath.
Drain will be a tip-toe style and drain outlet will be a direct drain.

H|S

HYDRO SYSTEMS

**Headquarters**29132 Avenue Paine
Valencia, CA 91355**Manufacturing Facility**385 Highway 155 South
McDonough, GA 30253**Technical Support**

support@hydrosystem.com

Orders Department

orders@hydrosystem.com

General Information

info@hydrosystem.com

Phone: 661-775-0686

Website: hydrosystem.com

CODES AND COMPLIANCES

Massachusetts code File no: P1-0614-491



ADA Compliant

All specifications and options subject to change without notice
please contact a hydro systems representative for more information.

CASEY

6038



STANDARD ACRYLIC COLORS



WHITE BISCUIT BONE

PREMIUM ACRYLIC COLORS



BLACK STERLING SILVER

WELLNESS OPTIONS



Cold Plunge

Revitalizing cold hydrotherapy into a traditional tub



Thermal Air

Tiny bubbles into the bathwater and offers untold relaxing benefits, similar to Swedish massage



Hydro Indulge

A concentrated dose of oxygen-rich molecules cleanse and restore skin



Advanced UV system

Ozone and UV light helps to disinfect the water and keep it clean



Chromatherapy

Digitally controlled, multicolored lighting feature LED lighting system



Hydro Fusion

Totally silent operation maintains ideal temperature without adding hot water constantly

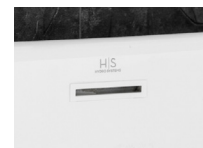


Hydro Blanket

Radiant heat emanates through the acrylic tub surface. Chose up to 2-5 panels..

OTHER OPTIONS

Additional options can be found on our website



Integral Waste and Overflow

Seamless built-in protection for bathtub (included)



Grab Bars

Adds functionality and enhanced styling. Affords a mounting solution in virtually any position on any tub.



Tower

Ideal solution adding systems or roman tub faucet to a freestanding bathtub.



Island Tub Drain

Asymmetrical 18 Gauge Epoxy coated Metal Deck Flange makes installation in tight spaces easier.

H|S

HYDRO SYSTEMS



Headquarters

29132 Avenue Paine
Valencia, CA 91355

Manufacturing Facility

385 Highway 155 South
McDonough, GA 30253

Technical Support

support@hydrosystem.com

Orders Department

orders@hydrosystem.com

General Information

info@hydrosystem.com

Phone: 661-775-0686

Website: hydrosystem.com

CODES AND COMPLIANCES

Massachusetts code File no: P1-0614-491



ADA Compliant

All specifications and options subject to change without notice please contact a hydro systems representative for more information.