

DESIGNER COLLECTION

CHAGALL

7238

SIZE

72" L x 38"W x 24"D

WATER CAPACITY

105 Gallons

WEIGHT

200 Pounds

INSTALLATION

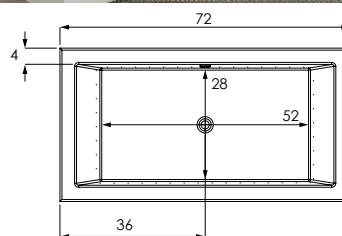
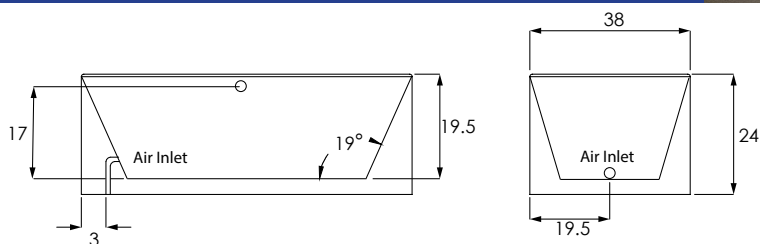
Freestanding

BACK SLOPE

19°

MATERIAL

Acrylic



MODEL

MCH7238ATO Tub Only

MCH7238ATA Thermal Air

COLORS

Standard Acrylic	White Biscuit Bone
Premium Acrylic	Black Sterling Silver
	Carmine Red Concrete Grey
	Distant Blue Grey Beige
	Moss Green Orange
Premium Hydroluxe Colors	Brown Pastel Violet Purple
	Violet Red Orange Sapphire Blue Signal Orange
	Stone Grey Tarpaulin Grey Terra Brown

FINISH

Matte Finish	MAT (must specify if desired)
Polished Finish	STANDARD

DUAL COLOR OPTION

MODEL/COLOR1 INT/COLOR2 EXT	(XXX.XXX.XXX)
-----------------------------	---------------

SURFACES (outside only)

Metallic: Polished Nickel [PN]	
MODEL/METAL/COLOR	(XXX.XXX.XXX)

MODEL

COLD PLUNGE | [order form](#) CLD.PL

EXPORT CRATE FRT.EXPCRT

EXTRA HIGH DENSITY HI.DEN

GRAB BARS (Pair) Refer to price book for all available finishes

Standard Grab Bars	GRA.BAR-XXX
--------------------	-------------

Universal Grab Bars	UGB.BAR-XXX
---------------------	-------------

HEATED BACKREST INCLUDED ON THERMAL AIR

HYDRO BLANKET BLA.HEA-X
2 Zones | 3 Zones | 4 Zones | 5 Zones (W/ 2 Controls)

HYDRO COAT HYC.COA

HYDRO EXPRESS 69.104-HYD.EXP-FRE

HYDRO FUSION | [order form](#)

Hydro Fusion (Tub Only)	29.102
Hydro Fusion w/ Ozone (Tub Only)	29.103
Hydro Fusion (TA, Whirlpool, Combo)	29.107

HYDRO INDULGE | [order form](#) HYD.IND

HYDRO OZONE INCLUDED ON THERMAL AIR



HYDRO SYSTEMS



Headquarters
29132 Avenue Paine
Valencia, CA 91355

Manufacturing Facility
385 Highway 155 South
McDonough, GA 30253

Technical Support
support@hydrosystem.com

Orders Department
orders@hydrosystem.com

General Information
info@hydrosystem.com
Phone: 661-775-0686
Website: hydrosystem.com

CODES AND COMPLIANCES

Massachusetts code File no: P1-0614-491



All specifications and options subject to change without notice
please contact a hydro systems representative for more information.

CHAGALL

7238

DESCRIPTION

LED TEMP. READOUT KEYPAD

Upgrade only, must have a keypad controlled system to purchase.

LED.UPG

LIGHTING

LED Bath Light Chromotherapy System

LIG.LED

DESCRIPTION

REMOTE CONTROL

Must must have system to purchase

REM.CON

TOWER

Must specify size & location on tub. Can hide plumbing, fusion, or indulge.

TOW-XX

18" or 24"

25" - 30"

31" - 36"

37" - 42"

43" - 48"

49" - 54"

55" - 60"

Access Panel

INTEGRAL W/O (Std. round)

IWO.XX (INCLUDED)

Waste and overflow manufactured as part of the bath.
Comes standard as a round overflow cover. Drain will be a tip-toe style and drain outlet will be a direct drain.

(WHI, BIS, PC, PB, PN, BC, BB, BN, SC, SB, SN, ORB, PE, MB)

W/O - Gold Finish Upgrade (PG, BG)

LINEAR INTEGRAL W/O

LWO-XXX (NO CHARGE UPGRADE)

Waste and overflow manufactured as part of the bath.
Drain will be a tip-toe style and drain outlet will be a direct drain.



HYDRO SYSTEMS

**Headquarters**29132 Avenue Paine
Valencia, CA 91355**Manufacturing Facility**385 Highway 155 South
McDonough, GA 30253**Technical Support**

support@hydrosystem.com

Orders Department

orders@hydrosystem.com

General Information

info@hydrosystem.com

Phone: 661-775-0686

Website: hydrosystem.com

CODES AND COMPLIANCES

Massachusetts code File no: P1-0614-491



ADA Compliant

All specifications and options subject to change without notice
please contact a hydro systems representative for more information.

CHAGALL

7238



STANDARD ACRYLIC COLORS PREMIUM ACRYLIC COLORS



PREMIUM HYDROLUXE COLORS



WELLNESS OPTIONS



Cold Plunge

Revitalizing cold hydrotherapy into a traditional tub



Thermal Air

Tiny bubbles into the bathwater and offers untold relaxing benefits, similar to Swedish massage



Hydro Indulge

A concentrated dose of oxygen-rich molecules cleanse and restore skin



Advanced UV system

Ozone and UV light helps to disinfect the water and keep it clean



Chromotherapy

Digitally controlled, multicolored lighting feature LED lighting system



Hydro Fusion

Totally silent operation maintains ideal temperature without adding hot water constantly

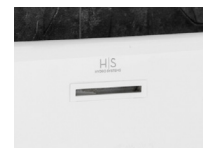


Hydro Blanket

Radiant heat emanates through the acrylic tub surface. Chose up to 2-5 panels..

OTHER OPTIONS

Additional options can be found on our website



Integral Waste and Overflow

Seamless built-in protection for bathtub (included)



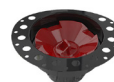
Grab Bars

Adds functionality and enhanced styling. Affords a mounting solution in virtually any position on any tub.



Tower

Ideal solution adding systems or roman tub faucet to a freestanding bathtub.



Island Tub Drain

Asymmetrical 18 Gauge Epoxy coated Metal Deck Flange makes installation in tight spaces easier.

Installation Tips:

- When adding integral linear drain p-trap location is now below waste
- Adding multiple systems/options may require equipment to stick out from tub deck or be installed remotely



Headquarters
29132 Avenue Paine
Valencia, CA 91355

Manufacturing Facility
385 Highway 155 South
McDonough, GA 30253

Technical Support
support@hydrosystem.com

Orders Department
orders@hydrosystem.com

General Information
info@hydrosystem.com
Phone: 661-775-0686
Website: hydrosystem.com

CODES AND COMPLIANCES

Massachusetts code File no: P1-0614-491



All specifications and options subject to change without notice please contact a hydro systems representative for more information.