

DESIGNER COLLECTION

DONATELLO

6636

SIZE

66" L x 36"W x 24"D

WATER CAPACITY

95 Gallons

WEIGHT

180 Pounds

INSTALLATION

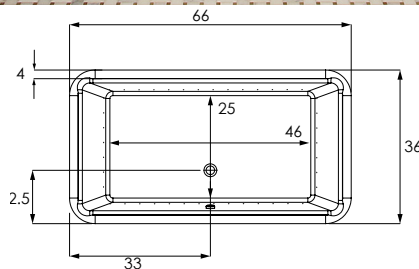
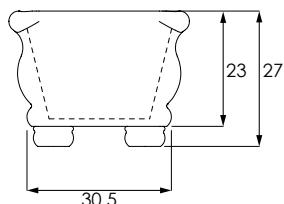
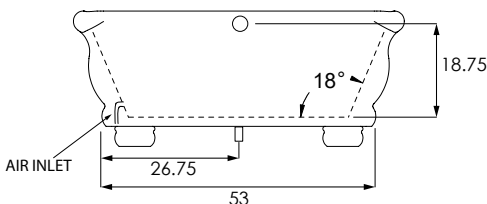
Freestanding

BACK SLOPE

18°

MATERIAL

Acrylic



MODEL

MDO6636ATO	Tub Only
MDO6636ATA	Thermal Air

COLORS

Standard Acrylic	White Biscuit Bone
Premium Acrylic	Black Sterling Silver Carmine Red Concrete Grey Distant Blue Grey Beige Moss Green Orange Brown Pastel Violet Purple Violet Red Orange Sapphire Blue Signal Orange Stone Grey Tarpaulin Grey Terra Brown
Premium Hydroluxe Colors	

FINISH

Matte Finish	MAT (must specify if desired)
Polished Finish	STANDARD

DUAL COLOR OPTION

MODEL/COLOR1 INT/COLOR2 EXT	(XXX.XXX.XXX)
-----------------------------	---------------

SURFACES (outside only)

Metallic: Polished Nickel [PN]	
MODEL/METAL/COLOR (XXX.XXX.XXX)	

MODEL

COLD PLUNGE order form	CLD.PL
---	--------

EXPORT CRATE	FRT.EXPCRT
---------------------	------------

EXTRA HIGH DENSITY	HI.DEN
---------------------------	--------

GRAB BARS (Pair) Refer to price book for all available finishes

Standard Grab Bars	GRA.BAR-XXX
Universal Grab Bars	UGB.BAR-XXX

HEATED BACKREST	INCLUDED ON THERMAL AIR
------------------------	-------------------------

HYDRO BLANKET 2 Zones 3 Zones 4 Zones 5 Zones 2 Controls	BLA.HEA-X
--	-----------

HYDRO COAT	HYC.COA
-------------------	---------

HYDRO EXPRESS	69.104-HYD.EXP-FRE
----------------------	--------------------

HYDRO FUSION | [order form](#)

Hydro Fusion (Tub Only)	29.102
Hydro Fusion w/ Ozone (Tub Only)	29.103
Hydro Fusion (TA, Whirlpool, Combo)	29.107

HYDRO INDULGE order form	HYD.IND
---	---------

HYDRO OZONE	INCLUDED ON THERMAL AIR
--------------------	-------------------------



HYDRO SYSTEMS



Headquarters

29132 Avenue Paine
Valencia, CA 91355

Manufacturing Facility

385 Highway 155 South
McDonough, GA 30253

Technical Support

support@hydrosystem.com

Orders Department

orders@hydrosystem.com

General Information

info@hydrosystem.com

Phone: 661-775-0686

Website: hydrosystem.com

CODES AND COMPLIANCES

Massachusetts code File no: P1-0614-491



All specifications and options subject to change without notice
please contact a hydro systems representative for more information.

DONATELLO

6636

DESCRIPTION

LED TEMP. READOUT KEYPAD

Upgrade only, must have a keypad controlled system to purchase.

LED.UPG

LIGHTING

LED Bath Light Chromatherapy System

LIG.LED

DESCRIPTION

REMOTE CONTROL

Must must have system to purchase

REM.CON

TOWER

Must specify size & location on tub. Can hide plumbing, fusion, or indulge.

TOW-XX

18" or 24"

25" - 30"

31" - 36"

37" - 42"

43" - 48"

49" - 54"

55" - 60"

Access Panel

INTEGRAL W/O

IWO.XX (INCLUDED)

Waste and overflow manufactured as part of the bath.
Comes standard as a round overflow cover. Drain will be a tip-toe style and drain outlet will be a direct drain.

(WHI, BIS, PC, PB, PN, BC, BB, BN, SC, SB, SN, ORB, PE, MB)

W/O - Gold Finish Upgrade (PG, BG)

LINEAR INTEGRAL W/O

LWO-XXX (NO CHARGE UPGRADE)

Waste and overflow manufactured as part of the bath.
Drain will be a tip-toe style and drain outlet will be a direct drain.



HYDRO SYSTEMS

**Headquarters**29132 Avenue Paine
Valencia, CA 91355**Manufacturing Facility**385 Highway 155 South
McDonough, GA 30253**Technical Support**

support@hydrosystem.com

Orders Department

orders@hydrosystem.com

General Information

info@hydrosystem.com

Phone: 661-775-0686

Website: hydrosystem.com

CODES AND COMPLIANCES

Massachusetts code File no: P1-0614-491



ADA Compliant

All specifications and options subject to change without notice
please contact a hydro systems representative for more information.

DONATELLO

6636



STANDARD ACRYLIC COLORS PREMIUM ACRYLIC COLORS



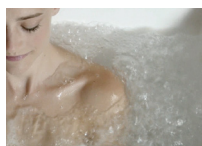
PREMIUM HYDROLUXE COLORS



WELLNESS OPTIONS



Cold Plunge
Revitalizing cold hydrotherapy into a traditional tub



Thermal Air
Tiny bubbles into the bathwater and offers untold relaxing benefits, similar to Swedish massage



Hydro Indulge
A concentrated dose of oxygen-rich molecules cleanse and restore skin



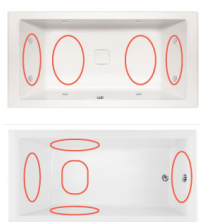
Advanced UV system
Ozone and UV light helps to disinfect the water and keep it clean



Chromatherapy
Digitally controlled, multicolored lighting feature LED lighting system



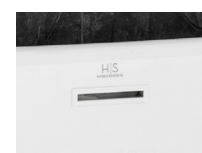
Hydro Fusion
Totally silent operation maintains ideal temperature without adding hot water constantly



Hydro Blanket
Radiant heat emanates through the acrylic tub surface. Chose up to 2-5 panels..

OTHER OPTIONS

Additional options can be found on our website



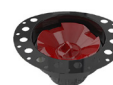
Integral Waste and Overflow
Seamless built-in protection for bathtub (included)



Grab Bars
Adds functionality and enhanced styling. Affords a mounting solution in virtually any position on any tub.



Tower
Ideal solution adding systems or roman tub faucet to a freestanding bathtub.



Island Tub Drain
Asymmetrical 18 Gauge Epoxy coated Metal Deck Flange makes installation in tight spaces easier.



Headquarters
29132 Avenue Paine
Valencia, CA 91355

Manufacturing Facility
385 Highway 155 South
McDonough, GA 30253

Technical Support
support@hydrosystem.com

Orders Department
orders@hydrosystem.com

General Information
info@hydrosystem.com
Phone: 661-775-0686
Website: hydrosystem.com

CODES AND COMPLIANCES

Massachusetts code File no: P1-0614-491



All specifications and options subject to change without notice please contact a hydro systems representative for more information.