

DESIGNER COLLECTION

# MICHELANGELO

## 7036

**SIZE**

70" L x 36"W x 23"D

**WATER CAPACITY**

105 Gallons

**WEIGHT**

210 Pounds

**INSTALLATION**

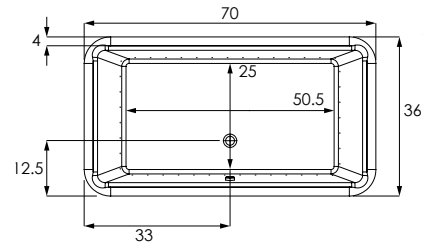
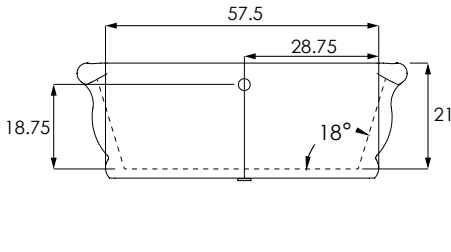
Freestanding

**BACK SLOPE**

18°

**MATERIAL**

Acrylic



**MODEL**

MMI7036ATO	Tub Only
MMI7036ATA	Thermal Air

**COLORS**

Standard Acrylic	White   Biscuit   Bone
Premium Acrylic	Black   Sterling Silver Carmine Red   Concrete Grey Distant Blue   Grey Beige Moss Green   Orange
Premium Hydroluxe Colors	Brown Pastel Violet Purple Violet   Red Orange   Sapphire Blue   Signal Orange   Stone Grey Tarpaulin Grey   Terra Brown

**FINISH**

Matte Finish	MAT (must specify if desired)
Polished Finish	STANDARD

**DUAL COLOR OPTION**

MODEL/COLOR1 INT/COLOR2 EXT	(XXX.XXX.XXX)
-----------------------------	---------------

**SURFACES (outside only)**

Metallic: Polished Nickel [PN]	
MODEL/METAL/COLOR (XXX.XXX.XXX)	

**COLD PLUNGE | [order form](#)**

CLD.PL
--------

**EXPORT CRATE**

FRT.EXPCRT
------------

**MODEL**

<b>EXTRA HIGH DENSITY</b>	HI.DEN
---------------------------	--------

**GRAB BARS (Pair)** Refer to price book for all available finishes

Standard Grab Bars	GRA.BAR-XXX
Universal Grab Bars	UGB.BAR-XXX

**HEATED BACKREST**

INCLUDED ON THERMAL AIR

**HYDRO BLANKET**

2 Zones   3 Zones   4 Zones   5 Zones (W/ 2 Controls)	BLA.HEA-X
---	-----------

**HYDRO COAT**

HYC.COA

**HYDRO EXPRESS**

69.104-HYD.EXP-FRE

**HYDRO FUSION | [order form](#)**

Hydro Fusion (Tub Only)	29.102
Hydro Fusion w/ Ozone (Tub Only)	29.103
Hydro Fusion (TA, Whirlpool, Combo)	29.107

**HYDRO INDULGE | [order form](#)**

HYD.IND

**HYDRO OZONE**

INCLUDED ON THERMAL AIR

**ISLAND TUB DRAIN**

ITD.XXX	
ABS, PVC	ITD.ABS   ITD.PVC
Cast Iron	ITD.CST



HYDRO SYSTEMS



**Headquarters**  
29132 Avenue Paine  
Valencia, CA 91355

**Manufacturing Facility**  
385 Highway 155 South  
McDonough, GA 30253

**Technical Support**  
support@hydrosystem.com

**Orders Department**  
orders@hydrosystem.com

**General Information**  
info@hydrosystem.com  
**Phone:** 661-775-0686  
**Website:** hydrosystem.com

**CODES AND COMPLIANCES**

Massachusetts code File no: P1-0614-491



All specifications and options subject to change without notice please contact a hydro systems representative for more information.

# MICHELANGELO

## 7036

**DESCRIPTION**

**LED TEMP. READOUT KEYPAD**  
 Upgrade only, must have a keypad controlled system to purchase. LED.UPG

**LIGHTING**  
 LED Bath Light Chromotherapy System LIG.LED

**MOLDED ARMRESTS**  
 Some molded armrests add an interior detail line to the bathtub 2 Armrests (one pair) ARM.MOL-2  
 4 Armrests (two pairs) ARM.MOL-4

**DESCRIPTION**

**REMOTE CONTROL**  
 Must must have system to purchase REM.CON

**TOWER**  
 Must specify size & location on tub. Can hide plumbing, fusion, or indulge. TOW-XX  
 18" or 24" 25" - 30"  
 31" - 36" 37" - 42"  
 43" - 48" 49" - 54"  
 55" - 60" Access Panel

**INTEGRAL W/O** IWO.XX (INCLUDED)

Waste and overflow manufactured as part of the bath. Comes standard as a round overflow cover. Drain will be a tip-toe style and drain outlet will be a direct drain.

(WHI, BIS, PC, PB, PN, BC, BB, BN, SC, SB, SN, ORB, PE, MB)

W/O - Gold Finish Upgrade (PG, BG)

**LINEAR INTEGRAL W/O** LWO-XXX (NO CHARGE UPGRADE)

Waste and overflow manufactured as part of the bath. Drain will be a tip-toe style and drain outlet will be a direct drain.



HYDRO SYSTEMS



**Headquarters**  
 29132 Avenue Paine  
 Valencia, CA 91355

**Manufacturing Facility**  
 385 Highway 155 South  
 McDonough, GA 30253

**Technical Support**  
 support@hydrosystem.com

**Orders Department**  
 orders@hydrosystem.com

**General Information**  
 info@hydrosystem.com

**Phone:** 661-775-0686  
**Website:** hydrosystem.com

**CODES AND COMPLIANCES**

Massachusetts code File no: P1-0614-491



All specifications and options subject to change without notice please contact a hydro systems representative for more information.

# MICHELANGELO

## 7036



**STANDARD ACRYLIC COLORS**    **PREMIUM ACRYLIC COLORS**



**PREMIUM HYDROLUXE COLORS**



**WELLNESS OPTIONS**



**Cold Plunge**  
Revitalizing cold hydrotherapy into a traditional tub



**Thermal Air**  
Tiny bubbles into the bathwater and offers untold relaxing benefits, similar to Swedish massage



**Hydro Indulge**  
A concentrated dose of oxygen-rich molecules cleanse and restore skin



**Advanced UV system**  
Ozone and UV light helps to disinfect the water and keep it clean



**Chromotherapy**  
Digitally controlled, multicolored lighting feature LED lighting system



**Hydro Fusion**  
Totally silent operation maintains ideal temperature without adding hot water constantly



**Hydro Blanket**  
Radiant heat emanates through the acrylic tub surface. Choose up to 2-5 panels..

**OTHER OPTIONS**

Additional options can be found on our website



**Integral Waste and Overflow**  
Seamless built-in protection for bathtub (included)



**Grab Bars**  
Adds functionality and enhanced styling. Affords a mounting solution in virtually any position on any tub.



**Tower**  
Ideal solution adding systems or roman tub faucet to a freestanding bathtub.



**Island Tub Drain**  
Asymmetrical 18 Gauge Epoxy coated Metal Deck Flange makes installation in tight spaces easier.

**Installation Tips:**

• When adding Thermal Air, blower must be remotely located



**Headquarters**  
29132 Avenue Paine  
Valencia, CA 91355

**Manufacturing Facility**  
385 Highway 155 South  
McDonough, GA 30253

**Technical Support**  
support@hydrosystem.com

**Orders Department**  
orders@hydrosystem.com

**General Information**  
info@hydrosystem.com  
**Phone:** 661-775-0686  
**Website:** hydrosystem.com

**CODES AND COMPLIANCES**

Massachusetts code File no: P1-0614-491



All specifications and options subject to change without notice please contact a hydro systems representative for more information.